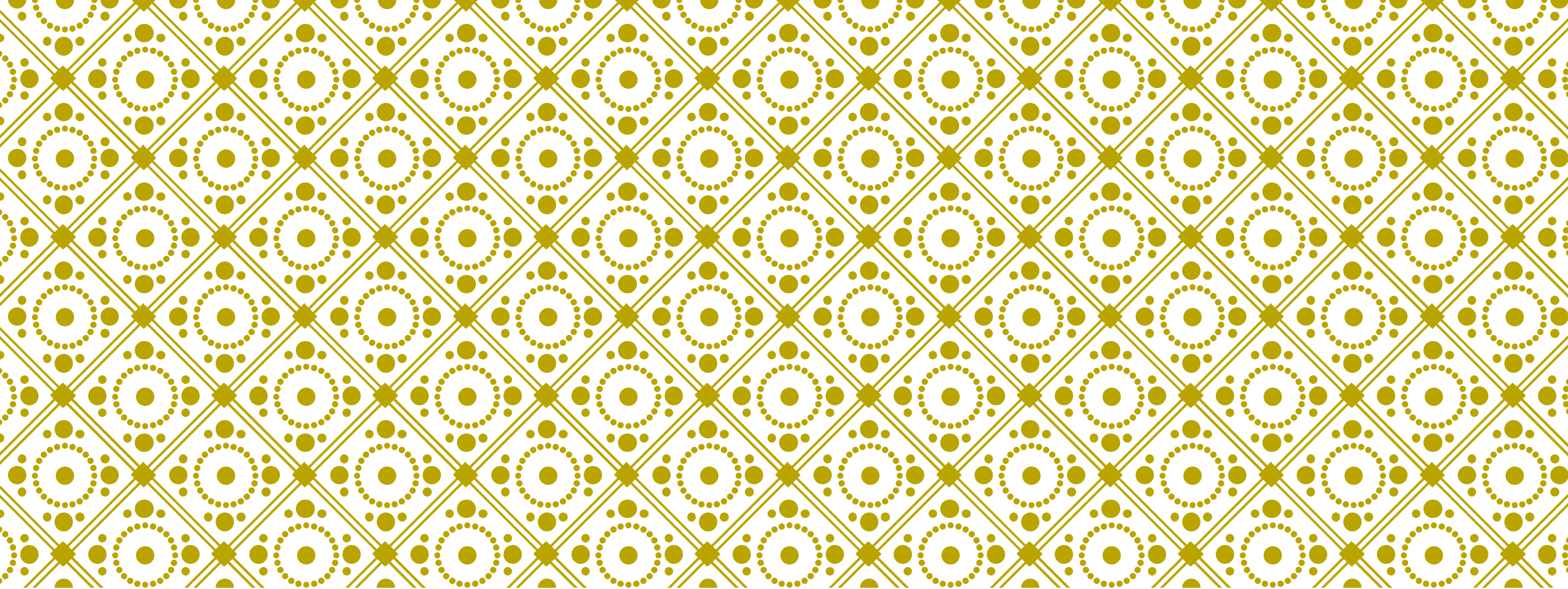


ALTON CASTLE –
CATHOLIC YOUTH RETREAT

4th – 6th
March 2019



MEDICAL/CONSENT FORMS

**Thank you for
these.**



ADULTS ACCOMPANYING THE CHILDREN

Ms. S. McAloon

Miss. S. Bell

Mrs. A. Scull



HELPFUL HANDOUTS

Do you have the following?

Student/Staff Kit List

Typical Retreat Timetable

MEDICATION AND TRAVEL SICKNESS

All medication must be placed in a named plastic bag with clear instructions.

We will **administer travel sickness** medication in ample time before travel. Please also provide additional medication for the return trip.

On the morning of Monday 4th March, please deliver any medication to Mrs Palmer.



SPENDING MONEY

If you would like to provide your child with spending money, we suggest a maximum of £5.00.

Please could all money be placed in a clearly named purse or wallet – your child will be responsible for their own money.



MOBILE PHONES AND ELECTRONIC DEVICES

MOBILE PHONES AND ELECTRONIC DEVICES
ARE NOT PERMITTED.

Other books/small games e.g. playing cards,
would be good to bring for the coach journey.



LOGISTICS

We will leave school at 13:45 on 4th March and return to school by 16:00 on Wednesday 6th March.

Upon arrival and departure, and in the unlikely event of any delay, the class WA group will be used to notify parents.

Parents will be contacted individually in the event of an emergency.

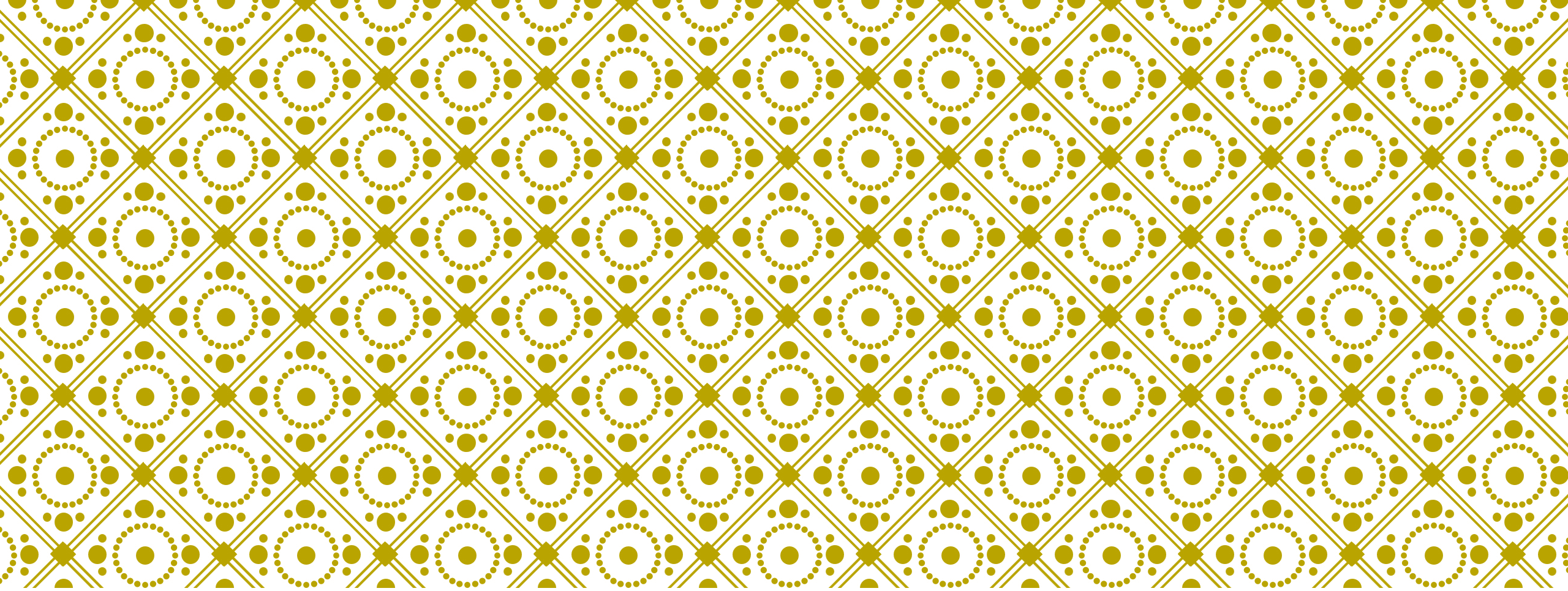


MONDAY 4TH MARCH 2019

LUNCH ARRANGEMENTS

If your child normally has a school lunch on a Monday, it's business as usual.

If your child has a packed lunch on Mondays, please could they bring their lunch in a named disposable bag/s – this will avoid the children's lunchboxes remaining in school for 3 days.



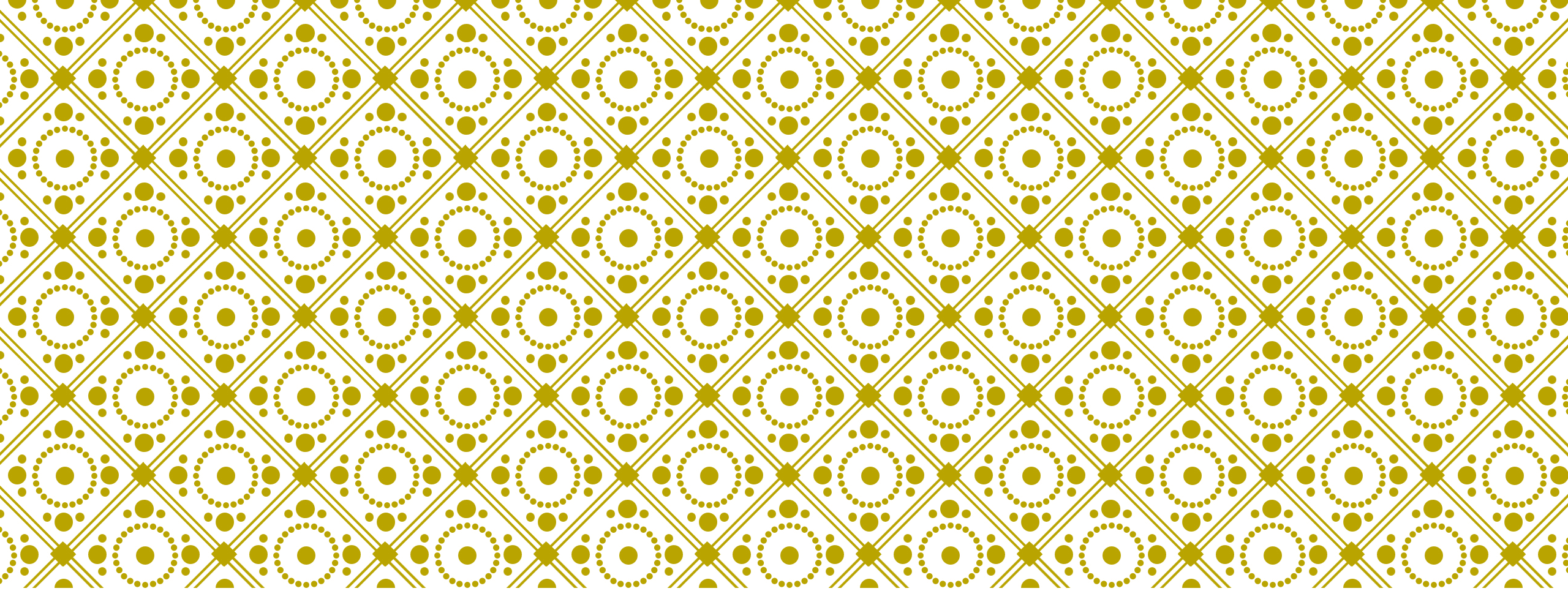
YOU CAN VISIT THE WEBSITE

[http://www.kenelmyo
uthtrust.org.uk/altonc
astle.html](http://www.kenelmyo
uthtrust.org.uk/altonc
astle.html)



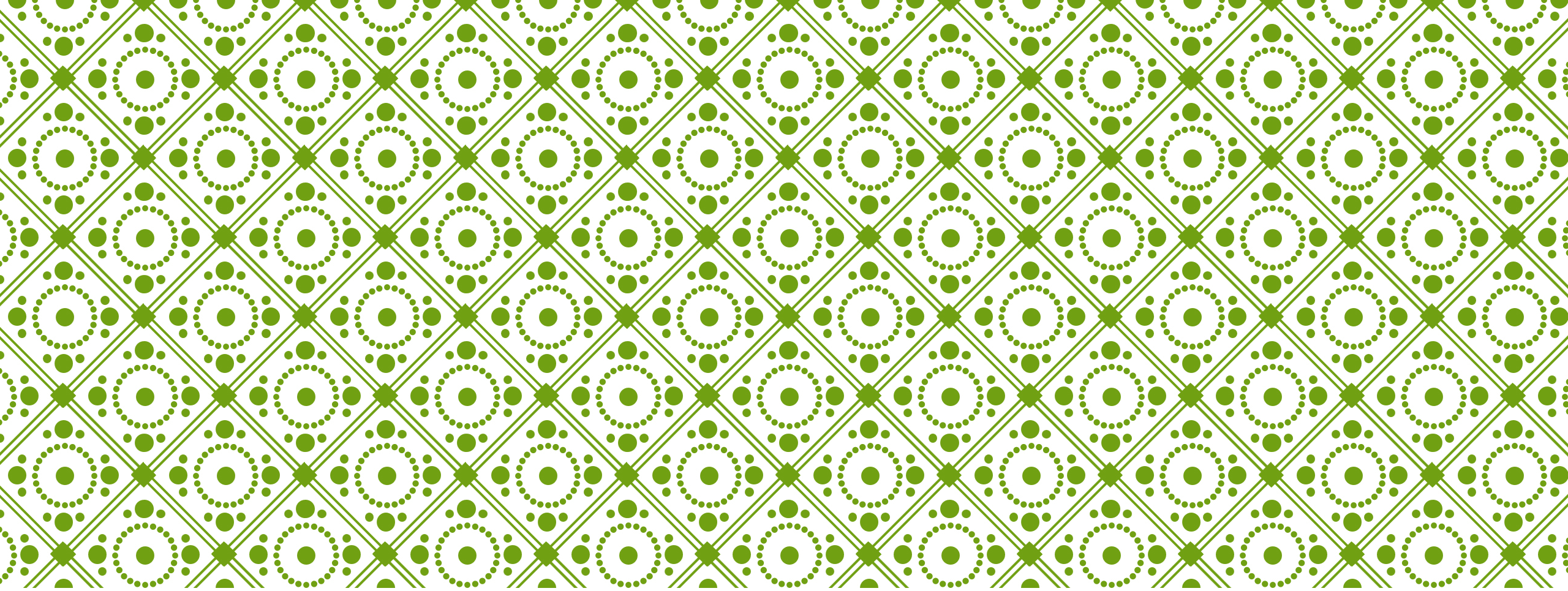
CONDUCT

Please be aware that in the event of any unacceptable behaviour, you will be contacted and asked to collect your child from the castle.



THANK YOU FOR LISTENING!





ANY QUESTIONS

**Alton Castle
2019**